

Idaho Resident MALE Suicide Deaths
Age Group by Year of Death
2003-2010

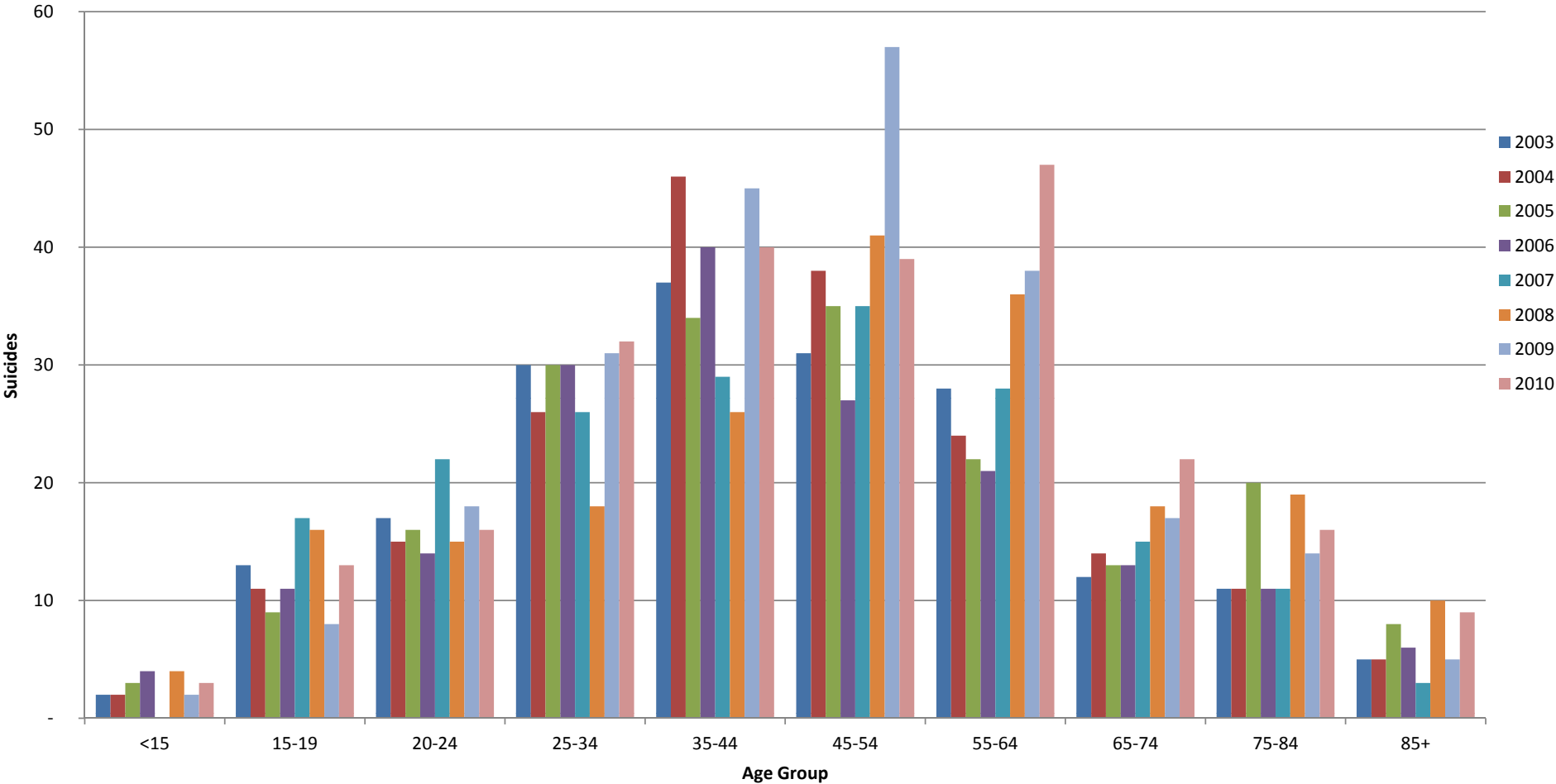
Age Group	Total	Year of Death							
		2003	2004	2005	2006	2007	2008	2009	2010
Total, all ages	1,134	186	192	190	177	186	203	235	237
<15	15	2	2	3	4	-	4	2	3
15-19	77	13	11	9	11	17	16	8	13
20-24	99	17	15	16	14	22	15	18	16
25-34	160	30	26	30	30	26	18	31	32
35-44	212	37	46	34	40	29	26	45	40
45-54	207	31	38	35	27	35	41	57	39
55-64	159	28	24	22	21	28	36	38	47
65-74	85	12	14	13	13	15	18	17	22
75-84	83	11	11	20	11	11	19	14	16
85+	37	5	5	8	6	3	10	5	9
Unknown	-	-	-	-	-	-	-	-	-

Idaho Resident FEMALE Suicide Deaths
Age Group by Year of Death
2003-2010

Age Group	Total	Year of Death							
		2003	2004	2005	2006	2007	2008	2009	2010
Total, all ages	237	32	47	35	41	34	48	72	53
<15	3	1	1	-	-	1	-	2	-
15-19	14	2	4	1	2	4	1	2	6
20-24	13	1	2	2	3	2	3	4	1
25-34	39	4	6	6	7	8	8	6	11
35-44	55	9	10	6	11	6	13	22	13
45-54	63	8	12	11	12	9	11	19	9
55-64	31	4	8	6	3	3	7	12	11
65-74	11	1	3	2	2	-	3	4	1
75-84	5	2	1	-	1	1	-	-	1
85+	3	-	-	1	-	-	2	1	-
Unknown	-	-	-	-	-	-	-	-	-

Source: Bureau of Vital Records and Health Statistics, Idaho Department of Health and Welfare (09/2011)
ICD-10 Codes for Suicide: X60.0-X84.9 and Y87.0

Idaho Resident MALE Suicide Deaths
Age Group by Year of Death 2003-2010



Idaho Resident FEMALE Suicide Deaths
Age Group by Year of Death 2003-2010

