

Ranking of Intentional self-harm ¹ as a leading cause of death
for Idaho residents by Sex 2003-2010

| Males | | | | | | | | |
|--------------|---------------------|---------|------------------|--------------------------|------|---------------------------|------|--|
| Year | Deaths | | | Death Rates ² | | | | |
| | Number of deaths | Percent | Idaho Ranking | Crude | | Age Adjusted ³ | | |
| | | | | Idaho | U.S. | Idaho | U.S. | |
| 2003 | 186 | 3.6% | 6 | 27.2 | 17.6 | 25.2 | 18.0 | |
| 2004 | 192 | 3.8% | 6 | 27.5 | 17.7 | 28.7 | 18.0 | |
| 2005 | 190 | 3.5% | 6 | 26.5 | 17.7 | 28.0 | 18.0 | |
| 2006 | 177 | 3.3% | 6 | 24.0 | 17.8 | 25.1 | 18.0 | |
| 2007 | 186 | 3.5% | 6 | 24.7 | 18.3 | 25.2 | 18.4 | |
| 2008 | 203 | 3.7% | 6 | 26.5 | | 27.4 | | |
| 2009 | 235 | 4.1% | 6 | 30.3 | | 31.6 | | |
| 2010 | 237 | 4.0% | 6 | 30.2 | | 31.2 | | |

| Females | | | | | | | | |
|----------------|---------------------|---------|------------------|--------------------------|------|---------------------------|------|--|
| Year | Deaths | | | Death Rates ² | | | | |
| | Number of deaths | Percent | Idaho Ranking | Crude | | Age Adjusted ³ | | |
| | | | | Idaho | U.S. | Idaho | U.S. | |
| 2003 | 32 | 0.6% | 15 | 4.7 | 4.3 | 4.5 | 4.2 | |
| 2004 | 47 | 0.9% | 11 | 6.3 | 4.6 | 6.4 | 4.5 | |
| 2005 | 35 | 0.7% | 15 | 4.9 | 4.5 | 5.7 | 4.4 | |
| 2006 | 41 | 0.8% | 13 | 5.6 | 4.6 | 5.9 | 4.5 | |
| 2007 | 34 | 0.6% | 16 | 4.6 | 4.8 | 4.7 | 4.7 | |
| 2008 | 48 | 0.9% | 12 | 6.3 | | 6.5 | | |
| 2009 | 72 | 1.3% | 10 | 9.4 | | 9.9 | | |
| 2010 | 53 | 1.0% | 12 | 6.8 | | 7.1 | | |

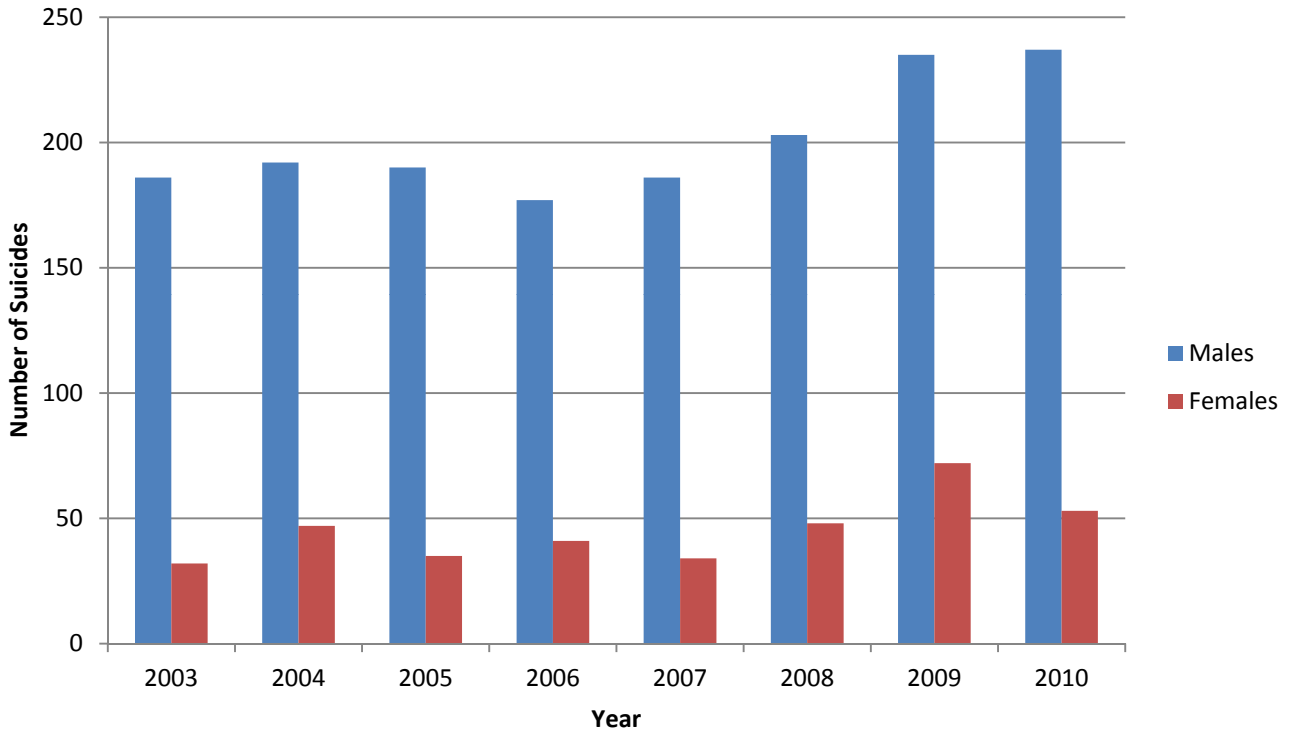
1. Intentional self-harm data are based on tenth revision of the International Classification of Diseases (ICD-10).

2. Rates are per 100,000 population. NA: not applicable.

3. Age-adjusted rates are artificial measures developed to eliminate the bias inherent in differing age compositions, thus allowing comparisons estimate as the standard population.between geographic regions. Idaho and U.S. age-adjusted rates were calculated using the 2000 U.S. population

Source: Idaho Department of Health and Welfare, Bureau of Vital Records and Health Statistics (10/2011).

2003-2010 Number of Suicide Deaths



2003-2010 Ranking Suicide as a Leading Cause of Death in Idaho

